



CHAPTER

4

FIVB VOLLEYBALL WORLD GRAND PRIX 2016 REFEREES

List of referees

Referee's Signals

FIVB REFEREES - WORLD GRAND PRIX - PRELIMINARY ROUND

GROUP 1						
JUNE 10 - 12, 2016	NINGBO, CHINA		RIO DE JANEIRO, BRAZIL		KALININGRAD, RUSSIA	
	CHN-USA-THA-GER		BRA-ITA-JPN-SRB		RUS-NED-TUR-BEL	
1. International Referee	Simone Santi	ITA	Patricia Rolf	USA	Daniele Rapisarda	ITA
2. International Referee	Heung Fai Lee	HKG	Karina Rene	ARG	Karin Zahorcova	CZE
3. International Referee	Maamer El Keboub	ALG	Luis Macias	MEX	TBC	
4. International Referee	Joo-Hee Kang	KOR	Walter Vera Mechan	PER	Philippe Schurmann	LIE
5. Local Referee	Ziling Wang	CHN	Anderson Cacador	BRA	Alexey Pashkevich	RUS

JUNE 17 -19, 2016	MACAO		LONG BEACH, USA		BARI, ITALY	
	BRA-BEL-SRB-CHN		USA-GER-JPN-TUR		ITA-RUS-NED-THA	
1. International Referee	Nathanon Sowapark	THA	Scott Mclean	CAN	Hamid Alrousi	UAE
2. International Referee	Shin Muranaka	JPN	Anderson Cacador	BRA	Patricia Rolf	USA
3. International Referee	Martin Hudik	CZE	Susana Rodriguez Jativa	ESP	Arturo Di Giacomo	BEL
4. International Referee	Maamer El Keboub	ALG	Yuri Ramirez Ortiz	DOM	Rogelio Espalsky	BRA
5. Local Referee	Kit Wa Sio	MAC	Kevin Cull	USA	Luca Sobrero	ITA

JUNE 24 -26, 2016	ANKARA, TURKEY		HONG KONG		KYOTO, JAPAN	
	TUR-BRA-ITA-BEL		CHN-NED-GER-USA		JPN-RUS-THA-SRB	
1. International Referee	Fabrice Collados	FRA	Hae Yoeun Sung	KOR	Wojciech Maroszek	POL
2. International Referee	Karin Zahorcova	CZE	Waleed El Kheshen	EGY	Karina Rene	ARG
3. International Referee	Wensheng Luo	CHN	Nathanon Sowapark	THA	Kevin Cull	USA
4. International Referee	Christian Wolf	SUI	Takeshi Eshita	JPN	Joo-Hee Kang	KOR
5. Local Referee	Nurper Ozbar	TUR	Cedric Chung	HKG	Sumie Myoi	JPN



GROUP 2				
JUNE 3-5, 2016	ARGENTINA		POLAND	
	BUL-DOM-ARG-KEN		PUR-CZE-CAN-POL	
1. International Referee	Angela Grass	BRA	Ricardo Cabrera	ARG
2. International Referee	Hector Ortiz	PUR	Ronald Stahl Jr.	USA
3. International Referee	Elbis Zamora	VEN	Mustapha Grad	LIB
4. International Referee	Ziling Wang	CHN	Epaminondas Gerothodoros	GRE
5. Local Referee	Marcelo Pierobon	ARG	Agnieszka Michlic	POL

JUNE 10-12, 2016	CZECH REPUBLIC		POLAND	
	BUL-CZE-CAN-DOM		PUR-POL-ARG-KEN	
1. International Referee	Ralph Barnstorf	GER	Nurper Ozbar	TUR
2. International Referee	Kazuyoshi Yamamoto	JPN	Ute Maria Fischer	GER
3. International Referee	Zsolt Mezőffy	HUN	Taghreed Khattab	EGY
4. International Referee	Lofti Ben Youssef	TUN	Jacobus Nederhoed	NED
5. Local Referee	Vlastimil Kovar	CZE	Katarzyna Sokol	POL

GROUP 3				
JUNE 3-5, 2016	ALGERIA		AUSTRALIA	
	MEX-PER-KAZ-ALG		CRO-COL-AUS-CUB	
1. International Referee	Olivier Guillet	FRA	Fabian Carbajal Mozzo	URU
2. International Referee	Toan Phong Nguyen	AUS	Viktor Kozlovskyy	UKR
3. International Referee	Sumie Myoi	JPN	Irina Kabulbekova	KAZ
4. International Referee	Maissaa Hachem	SYR	Yuka Kitamura	JPN
5. Local Referee	Abed Khelfoun	ALG	Robert Szydłowski	AUS

JUNE 10-12, 2016	COLOMBIA		PERU	
	AUS-COL-KAZ-MEX		CRO-PER-CUB-ALG	
1. International Referee	Lourdes Perez Perez	CUB	Andrew Cameron	CAN
2. International Referee	Mario Bernola Sanchez	ESP	Daniel Gonzalez	MEX
3. International Referee	Angela Grass	BRA	Edgar Serole	BOT
4. International Referee	Andrew Robb	CAN	Sonja Simonovska	MNE
5. Local Referee	Misael Galindo Reyaz	COL	Rocio Huaracaya Lopez	PER

2016 WORLD GRAND PRIX FINAL GROUP 1

06-10 JULY 2016	BANGKOK, THAILAND	
International Referee	Susana Rodriguez Jativa	ESP
International Referee	Piotr Dudek	POL
International Referee	Denny Cespedes Lassi	DOM
International Referee	Joo Hee Kang	KOR
International Referee	Mohammad Shahmiri	IRI
International Referee	Taoufik Bouda a	TUN
International Referee	Hernan Casasmiquela	ARG
Local Referee	Nathanon Sowapark	THA

2016 WORLD GRAND PRIX FINAL GROUP 2

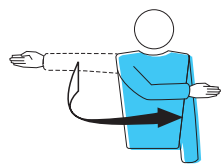
17-19 JUNE 2016	VARNA, BULGARIA	
International Referee	Ahti Huhtaniska	FIN
International Referee	Heung Fai Lee	HKG
International Referee	Taghreed Khattab	EGY
International Referee	Epaminondas Gerothodoros	GRE
Local Referee	Aleksandar Vinaliev	BUL

2016 WORLD GRAND PRIX FINAL GROUP 3

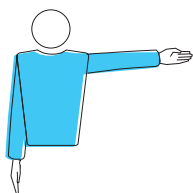
06-10 JULY 2016 17-19 JUNE 2016	ALMATY, KAZAKHSTAN	
International Referee	Ivaylo Ivanov	BUL
International Referee	Elbis Zamora	VEN
International Referee	Eldar Zulfugarov	AZE
International Referee	Lai Chun Cheng	TPE
Local Referee	Irina Kabulbekova	KAZ



Technical indications



Authorisation to serve



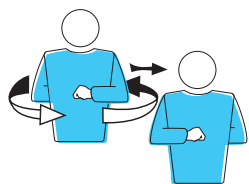
Team to serve



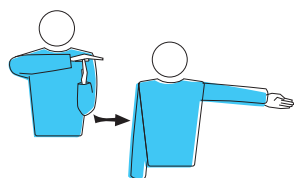
Substitution



End of set
(or match)



Change of courts

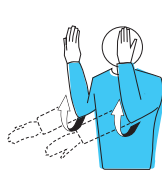


Time-out

Judgment on the ball by the first referee



Ball "in"



Ball "out"

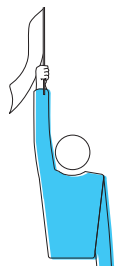


Ball touched

Judgment on the ball by the line judges (flag signals)



Ball "in"



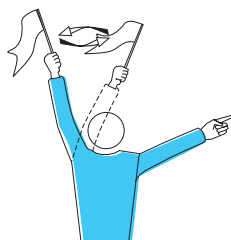
Ball "out"



Ball touched

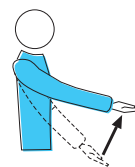


Judgement
impossible

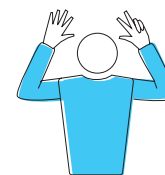


Ball touched an
outside object

Ball handling



Ball not tossed
or released at
the service hit



Delay in service



Catch



Double contact



Four hits

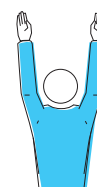


Penetration into the opponent court
Ball crossing the lower space or
The server touches the court (end line) or
The player steps outside his/her court at the moment of the service hit



Double fault and replay

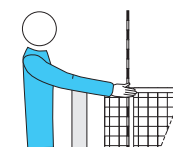
Player's faults



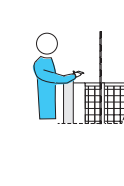
Blocking fault
or screening



Positional or
rotational fault



Net touched
by player



Reaching beyond
the net



Attack hit fault

Sanctions



Misconduct
warning



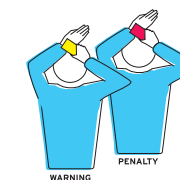
Misconduct
Penalty



Expulsion



Disqualification



Delay Warning/
Delay Penalty

Rally point system

With the Rally Point System – first featured at the 1998 World Championships – the team winning a rally scores a point regardless of which team is serving. When a team wins a rally, it gains a point and the right to serve. The last tournament played with the “sideout” system was the 1997 FIVB World Grand Champions Cup.

Match format

Matches are decided over the best of five sets. The first four sets are played to 25 points and the fifth set is played to 15 points. A set (except the deciding fifth set) is won by the team which first scores 25 points with a minimum lead of two points. In the case of a 24-24 tie, play is continued until a two-point lead is achieved (i.e. 26-24; 27-25). In the case of a 2-2 tie, the deciding fifth set is played to 15 points with a minimum lead of 2 points. This new scoring system was introduced after the 1998 FIVB World Congress held in Tokyo.

Libero player

The Libero is a specialist defensive player, dressed in a different colour who can replace any player in a back row position. The Libero is not allowed to serve, block or attack, and can hand set only from the back row.

‘Let service in play’

If, when serving, the ball touches the net and continues to the opposite side, the play continues. If the ball hits the net during the serve, it is still in play.



Touching the net

Touching the net with the body is a fault except when playing the ball or interfering with the play. Contact with the net by a player between the antennae, during the action of playing the ball, is a fault.

Time Outs

Each team is entitled to a maximum of two time-outs and all time outs last for 30 seconds per set. For FIVB world and official competitions, during sets one to four, two additional 60-second technical time outs are applied automatically, when the leading team reaches the eighth and 16th points. In the deciding fifth set there are no technical time outs.

Intervals between sets

All intervals between sets are for three minutes. The interval between the second and third set can be extended up to 10 minutes at the request of the organiser.

Coach movements

The coach may give these instructions by sitting on the bench, standing or walking within the free zone of his or her team's bench, up to the warm up area, provided that he or she does not disturb or delay the match.

Screening

The players of the serving team must not prevent their opponent, through individual or collective screening, from seeing the server and the flight path of the ball during the serve.

The full Rules of the Game text for volleyball can be found on the official FIVB website (www.fivb.com).